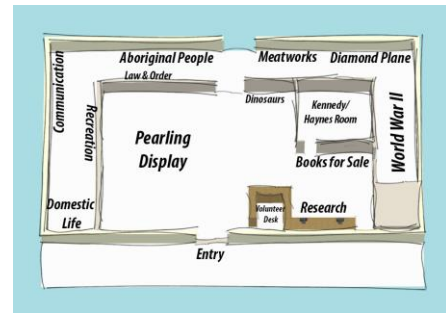




Section A: Pearling

1. Explore the equipment used by pearl divers.
 What did it mean if a diver pulled on his breast rope four times?



2. List at least three ways that pearl shells were used?

- _____
- _____
- _____

3. In 1901, when Australia became a nation, there were 1358 Asian and 132 Europeans working in the Broome pearl industry. Locate and describe an object or image which indicates positive relationships between different racial groups.

4. Locate and describe an object or image which suggests racial tensions.

5. Plastic was invented in the 1950s. Why did it end the demand for pearl shells?

Section B: Aboriginal culture and rights


1. Explore the Aboriginal artefacts and historical photos to help explore the lifestyle of Aboriginal groups from the Kimberley area. How might the objects have been used? Describe or sketch an item that could be used for each of the following:

Collecting plants	Hunting	Armour
Decoration	Preparing food	Making tools

2. Locate the neck chain and the accompanying image of Aboriginal prisoners. Discuss or reflect on the following questions: What do you see? What do you think about that? What does it make you wonder?

Section C: Wartime

Look carefully at the display related to Broome during times of war. Use it to create a front page newspaper story for the West Australian newspaper. As well as providing a date, catchy headline and sketched image, you should write the opening paragraph of the article – which tells the reader who, what, when, where and why.

	
Date :	
<hr/> <hr/> <hr/> <hr/> <hr/> <hr/> <hr/> <hr/> <hr/> <hr/> <hr/> <hr/> <hr/> <hr/> <hr/> <hr/> <hr/> <hr/> <hr/> <hr/> <hr/> <hr/> <hr/> <hr/>	

Section D: Communication

Explore the communications equipment used in Broome. What technology allowed:

- Communication between Broome and London in 1889?

- Contact with sea vessels from 1913? _____
- Broome locals to stay in touch with each other until 1982? _____
- Locals to keep up with the news of the day from 1912 to 1930? _____

Why do you think communication technology has been particularly important for people living in Broome?

Section E: Museum themes

The Broome Historical Museum is organised around themes which relate to the history of the area. Select six items from the museum collection (explore the Museum and the outbuildings) that you think best reflect each theme. Sketch your item in the space provided and then write a caption explaining how this object relates to the theme.

Cultural Diversity	
Aboriginal Culture & Rights	
Pearling Industry	
Domestic Life	
Communication	
Wartime	