

WELCOME TO THE BROOME HISTORICAL MUSEUM

Embark on a journey to discover the world of pearling and luggers, explore tales of exploitation and adventure, endure hardships and shipwrecks, and uncover stories of missing diamonds and tragic air raids.

This guide will help you navigate our museum's displays and exhibits.

The Broome Historical Society is an unfunded, community-based, not-for-profit organisation run by volunteers. Thank you for your entrance fee, which is essential for our continued operations.

VISITING WITH KIDS?

Ask at the front desk for a quiz and embark on a museum-wide treasure hunt for answers. We have levels suitable for everyone, from non-readers to primary school students. Don't forget to collect your reward when you've finished!

RUN OUT OF TIME?

Our visitors often underestimate the amount of time that can be spent here. If you'd like to return on another day, please ask the front desk volunteer for a pass-out voucher, valid for 7 days.

FAMILY HISTORY RESEARCH

If you have a pearling or Broome connection in your family history, please inquire at the front desk as we may have information on your ancestors. We also offer comprehensive research services for a nominal fee.

MUSEUM (CUSTOMS HOUSE)

Constructed in the late 1890s as a general store, the museum building became the headquarters of the Broome Customs Department in 1910, processing thousands of indentured pearling workers. The Broome Historical Society has operated the museum from this location since 1981.



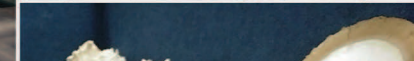
THE SAILMAKER'S SHED

Initially home to Bagge's sailmaking business and later used by the Power & Works Department, this building was nearly demolished after years of neglect. The Broome Historical Society rescued and restored it, earning a WA Heritage Award and a UNESCO High Commendation.



THE RAE VAL ANNEXE

Originally serving employees during the Port of Broome's construction, this building later housed the Country Women's Association. The Broome Historical Society moved and renovated it to support its growing collection.



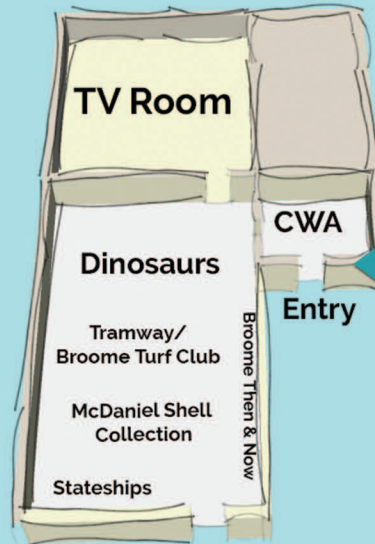
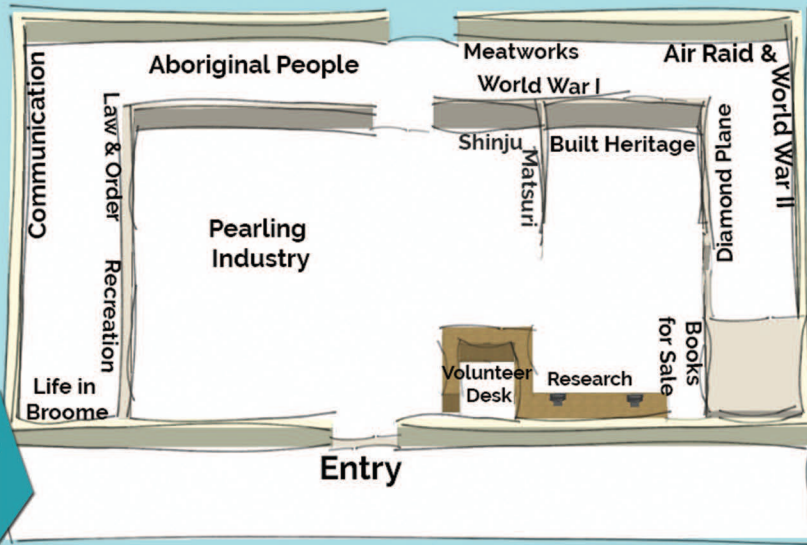
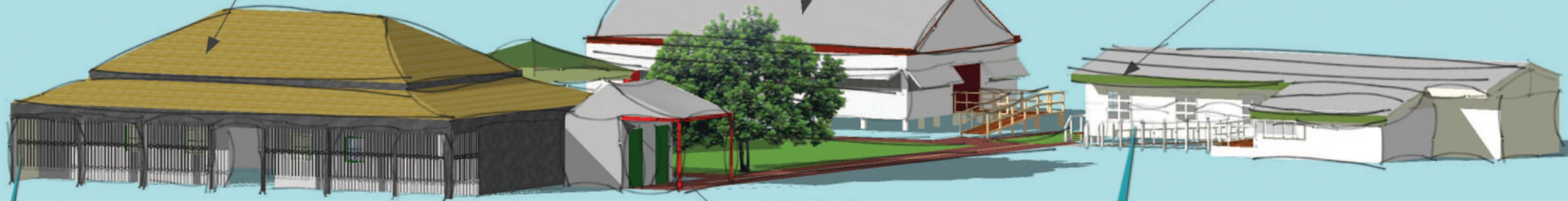
Broome Historical Museum
Visitor Guide

Museum
(Old Customs House)

Sailmaker's Shed

Rae Val Annexe

Toilets



BOOKS & SOUVENIRS

Take a piece of Broome history home with you by purchasing a book, pearl shell, or unique souvenir.

RESEARCH AREA

Are you researching a Broome-related topic or tracing your family history? Visit our research area, which offers a wealth of information, including digital access to our archives and photo collections.

TV ROOM

Sit back and enjoy a wide range of historical films in the comfort of our air-conditioned TV room.

Town Beach Reserve | PO Box 559
Broome WA 6725 (08) 9192 2075
www.broomemuseum.org.au
admin@broomemuseum.org.au



PEARLING INDUSTRY

Broome was once celebrated as the pearling capital of the world. Explore the pearling display and dive into the fascinating details of this unique industry.

BROOME AIR RAID

Delve into the dramatic history of Broome's WWII air raids, which had devastating impacts on the area. Uncover the stories and learn more about this significant chapter in Broome's past.

SAILMAKER'S EXHIBITION

Explore the tools and techniques of a turn-of-the-century sailmaker in our restored, heritage award-winning Sailmaker's Shed.

RAE VAL ANNEXE

Discover the ancient world with casts of dinosaur footprints from 130 million years ago. Explore the McDaniel Shell Collection and the Stateships Story.

Find us on 
Broome Historical Museum

